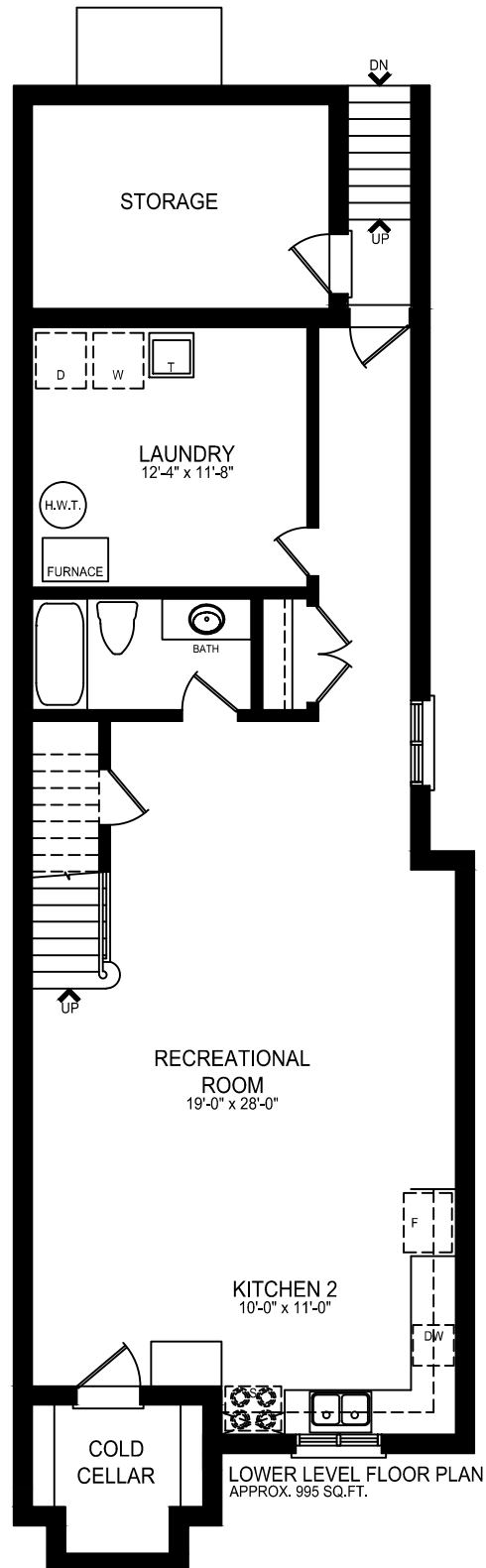


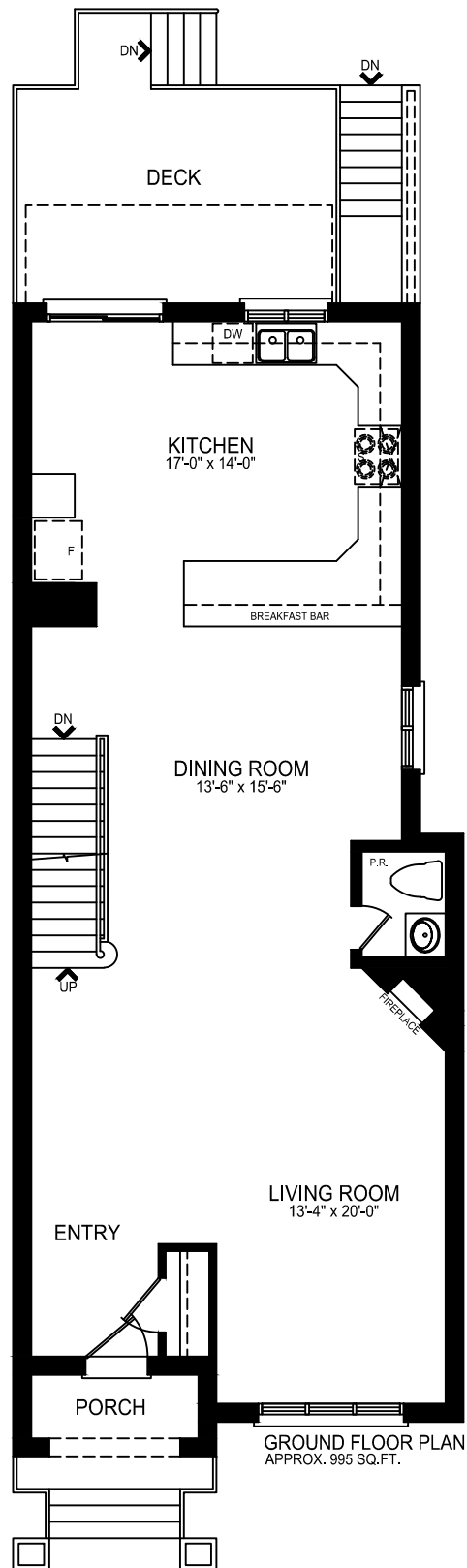
69 Holborne Avenue

Approx. 1,950 sq.ft.
Including Lower Level Approx. 2,945 sq.ft.



69 Holborne Avenue

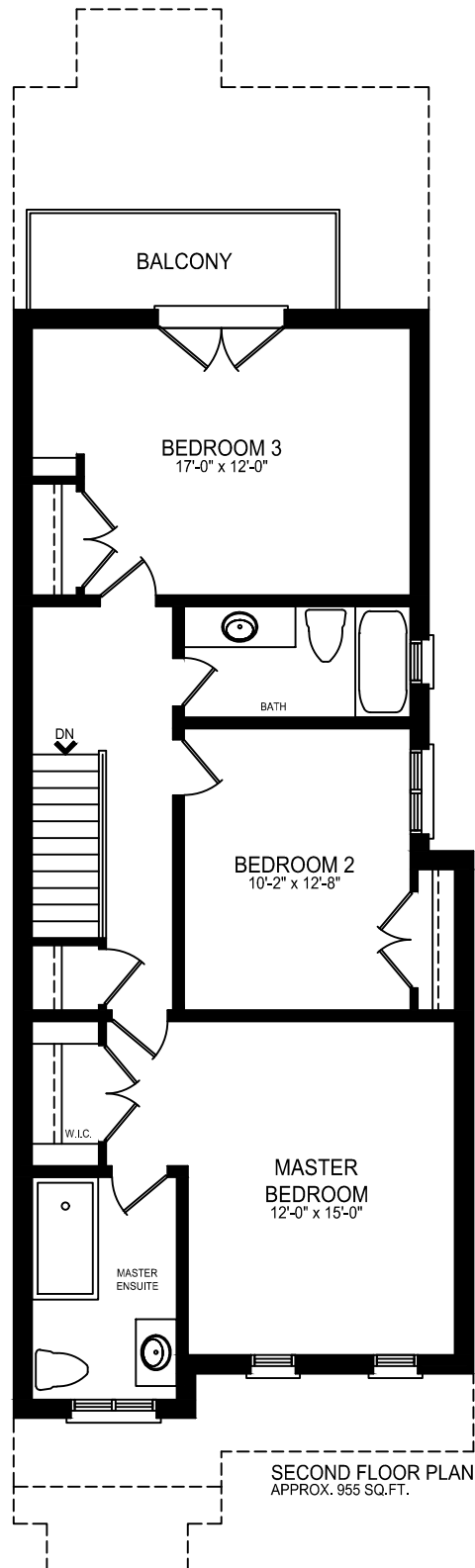
Approx. 1,950 sq.ft.
Including Lower Level Approx. 2,945 sq.ft.



GROUND FLOOR PLAN
APPROX. 995 SQ.FT.

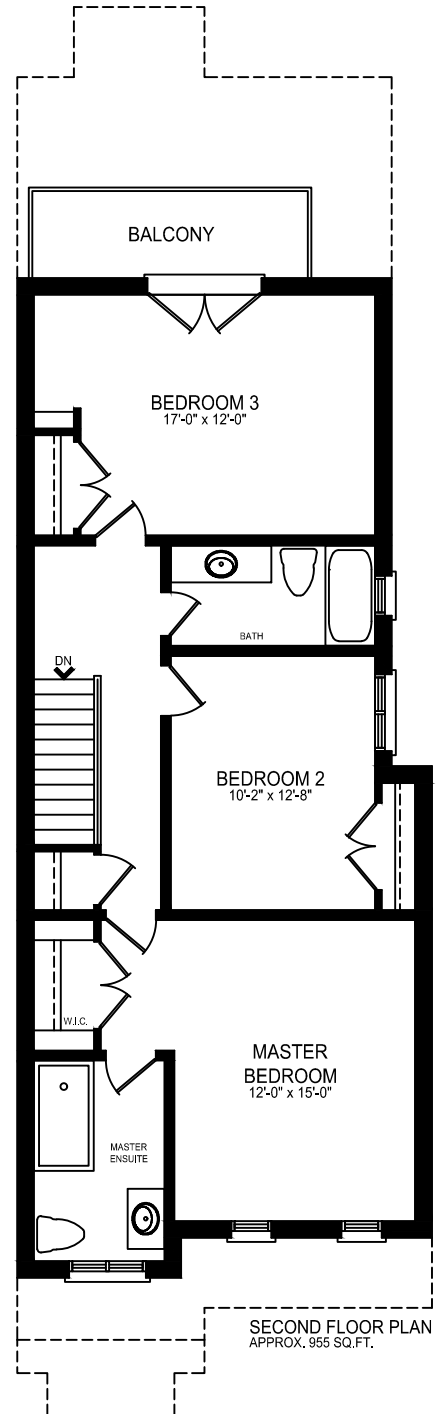
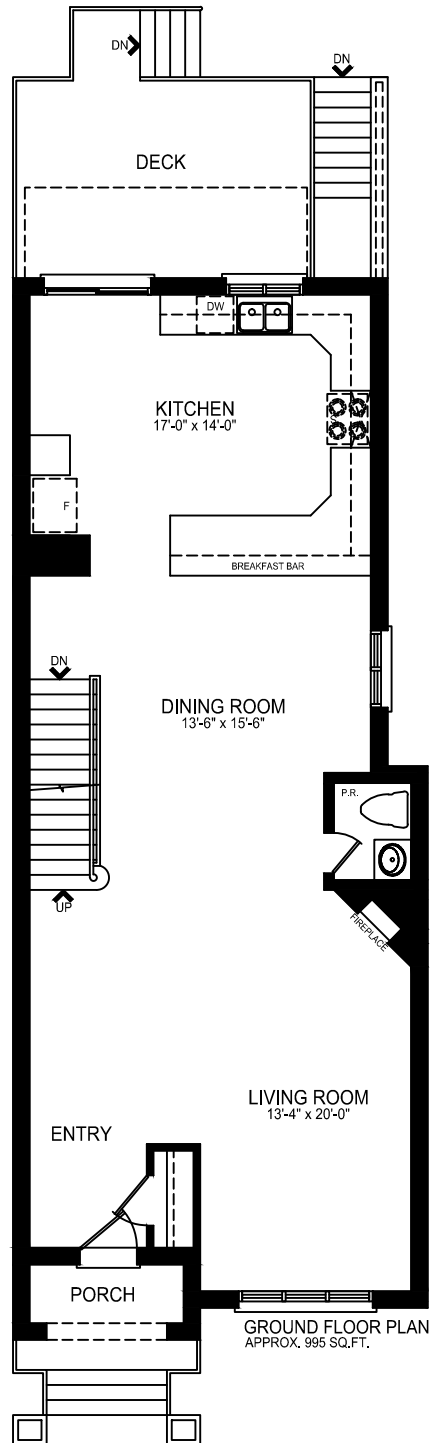
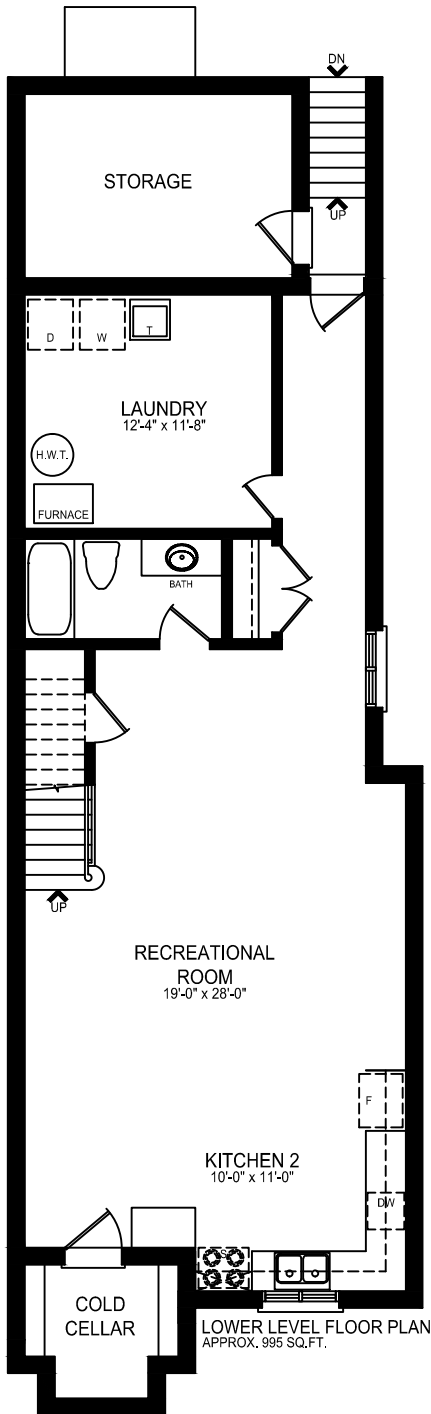
69 Holborne Avenue

Approx. 1,950 sq.ft.
Including Lower Level Approx. 2,945 sq.ft.



69 Holborne Avenue

Approx. 1,950 sq.ft.
Including Lower Level Approx. 2,945 sq.ft.



69 HOLBORNE AVENUE

JUNE/24/2015

LOWER LEVEL FLOOR

RECREATIONAL ROOM	19'-0" x 28'-0"	5.79m x 8.53m
KITCHEN 2	10'-0" x 11'-0"	3.04m x 3.35m
LAUNDRY ROOM	12'-4" x 11'-8"	3.75m x 3.55m

GROUND FLOOR

KITCHEN	17'-0" x 14'-0"	5.18m x 4.26m
LIVING ROOM	13'-4" x 20'-0"	4.06m x 6.09m
DINING ROOM	13'-6" x 15'-6"	4.11m x 4.72m

SECOND FLOOR

MASTER BEDROOM	12'-0" x 15'-0"	3.65m x 4.57m
BEDROOM 2	10'-2" x 12'-8"	3.09m x 3.86m
BEDROOM 3	17'-0" x 12'-0"	5.18m x 3.65m